

# DISABLED ACCESS HUNTING



Photo: Rich Fabend (Handihelp.net)

# ON FORT DRUM



Fish & Wildlife Management Program  
85 First St. West  
Fort Drum, NY 13602-5097  
315-772-9636  
[www.FortDrum.iSportsman.net](http://www.FortDrum.iSportsman.net)

2015

## General Information

- There are special hunting opportunities for persons possessing a NYS Non-Ambulatory Hunter Permit, persons with severe permanent disabilities eligible for a NYS Parking Permit or License Plate; or persons with a life-threatening illness participating through a non-profit organization. Contact Fort Drum's Fish & Wildlife Management Program to register.

- Training Areas 5E and 6C, (which are otherwise off-limits to recreation) are open to allow hunting with a shotgun and/or archery at six designated sites for game species during their respective seasons.



- There is also an accessible waterfowl blind in the Mattoon Creek Marsh in Training Area 17B. See the *Mattoon Marsh Waterfowl Hunting* brochure for more information.

## Check-in & Access

- Hunters wanting to access designated areas are required to check-in and check-out telephonically (772-7152) with Range Control.

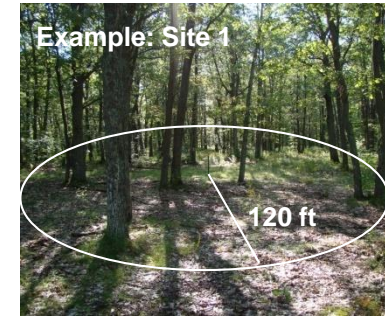
- Hunting areas can be reserved the day before or the day of the hunt. You will be asked your name, Fort Drum Recreation Permit number, and the names of other persons assisting.

- Once checked-in with Range Branch, the site can be accessed. Directions for each site area are provided in the site description. Signs are posted on the main road with a directional arrow for assistance.

- Info about each site can also be found at the Natural Resources Permit Office (Bldg. S-2509), or Fort Drum's Fish & Wildlife Management Program web site at [www.FortDrum.iSportsman.net](http://www.FortDrum.iSportsman.net).

## General Rules

- To allow control of access in these otherwise restricted areas while providing some flexibility for hunting, hunters must hunt within the designated radius of the center point at each site. The designated radius is listed under "Specifications" for each site description. The center point is posted with a sign (*below*) at each site.



Site #	Distance from Center Point
1	120
2	200
3	150
4	300
5	300
6	300

- Hunting may be conducted from vehicles, portable stands (tree stand or tripod), or portable blinds on the ground.

- Other persons can assist in hunting, but they may not possess a weapon. Persons assisting must also have a NYSDEC hunting license and Fort Drum Recreation Permit.

## SITE 1

### Location

Site 1 is located in TA 6C off of Munns Corner Road past the sand excavation pit.

**Lat-Long:** 44°03'13.573"N 75°40'41.167"W

**UTM:** E 445683 N 4878069

### Directions

Go 3.0 miles northeast on Munns Corner Road from the intersection of Munns Corner Road and Route 26 and take a right onto a sandy road and follow the signs.

### Description

A wooded area with a very open understory. The stand is composed mainly of red oak and very few white pine. Sight distance is approximately 100 yards.

### Specifications

Hunting is allowed within **120 feet** of the center point. Archery for big game and turkey is allowed—no firearms are allowed on Site 1.



Site 1



Site 2

## SITE 2

### Location

Site 2 is located in TA 6C between the DOL Ammunition Residue Turn-in-Point building, boundary fence and the Black River.

**Lat-Long:** 44°02'41.128"N 75°40'27.086"W

**UTM:** E 445988 N 4877065

### Directions

Go 3.6 miles northeast on Munns Corner Road from the intersection of Munns Corner Road and Route 26. Take a right at the Y in the road and turn right on paved road that is marked DOL Ammunition Residue Turn-in-Point. Continue straight for 0.1 miles then turn right and follow signs.

### Description

A wooded area recently burned and is mainly composed of red maple, red pine, and red oak. The understory is very open and is bordered by the Black River. Sight distance is approximately 100 yards.

### Specifications

Hunting is allowed within **200 feet** of the center point. Archery for big game and turkey hunting is allowed—no firearms are allowed on Site 2.

## SITE 3

### Location

Site 3 is located in TA 6C toward the end of Munns Corner Road where it is blocked by barricades.

**Lat-Long:** 44°02'35.079"N 75°40'10.392"W

**UTM:** E 446358 N 4876875

### Directions

Go 3.8 miles northeast on Munns Corner Road from the intersection of Munns Corner Road and Route 26 and take a right at the Y in the road and continue past the DOL Ammunition Residue Turn-in-Point. Turn right onto dirt path following signs and continue less than 0.1 miles.

### Description

A heavily wooded area dominated by gray birch, red maple, and quaking aspen. There are also red oak and scotch pine scattered throughout the hunting area. Two trails meet and create a small open area where the hunting site is located. Sight distance is limited to approximately 50 yards.

### Specifications

Hunting is allowed within **150 feet** of the center point. Archery for big game and turkey hunting is allowed—no firearms are allowed on Site 3.



Site 3



## SITE 4

### Location

Site 4 is located in TA 5E south southeast of Hubbard Crossing on South Tank Trail.

**Lat-Long:** 44°03'57.623"N 75°39'55.006"W

**UTM:** E 446721 N 4879419

### Directions

Go 2.6 miles north northwest on South Tank Trail Extension from the intersection of Route 3A and South Tank Trail. Go across the railroad tracks at Hubbard Crossing, take an immediate left and follow signs to Site 4.

### Description

This area has many small openings with small patches of wooded areas. Scotch pine and red oak dominate the stand and are mixed with white pine, red pine, gray birch, and red maple. Sight distance is approximately 50-100 yards.

### Specifications

Hunting is allowed within **300 feet** of the center point. Archery and shotguns for big game and turkey hunting are allowed.



Site 4



Site 5

## SITE 5

### Location

Site 5 is located in TA 5E off of the South Tank Trail west of Hubbard Crossing.

**Lat-Long:** 44°03'50.311"N 75°40'25.386"W

**UTM:** E 446043 N 4879199

### Directions

Go 3.0 miles north northwest on South Tank Trail Extension from the intersection of Route 3A and South Tank Trail Extension. Turn left onto the South Tank Trail across the railroad tracks at Hubbard Crossing and go approximately 0.4 miles to a sandy road on the left and follow signs.

### Description

An open field dominated by red oak, white pine, and red maple. Red pine, scotch pine, gray birch, and quaking aspen are also scattered throughout the wooded area around the field. Sight distance is approximately 100-200 yards.

### Specifications

Hunting is allowed within **300 feet** of the center point. Archery and shotguns for big game and turkey hunting are allowed.

## SITE 6

### Location

Site 6 is located in TA 5E at the intersection of Tower Road and the South Tank Trail.

**Lat-Long:** 44°03'26.023"N 75°39'31.054"W

**UTM:** E 447246 N 4878440

### Directions

Go 1.7 north northwest on South Tank Trail Extension from the intersection of Route 3A and South Tank Trail Extension. The parking area is near a latrine marked P21804 across from where Tower Road intersects the South Tank Trail Extension. The site is across the railroad tracks and is restricted to foot traffic.

### Description

A small open field surrounded mainly by quaking aspen, red oak, and red maple. Black cherry, scotch pine, white pine, and gray birch are also scattered throughout the area. The wooded area surrounding the field has a very open understory.

### Specifications

Hunting is allowed within **300 feet** of the center point. Archery and shotguns for big game and turkey hunting are allowed.



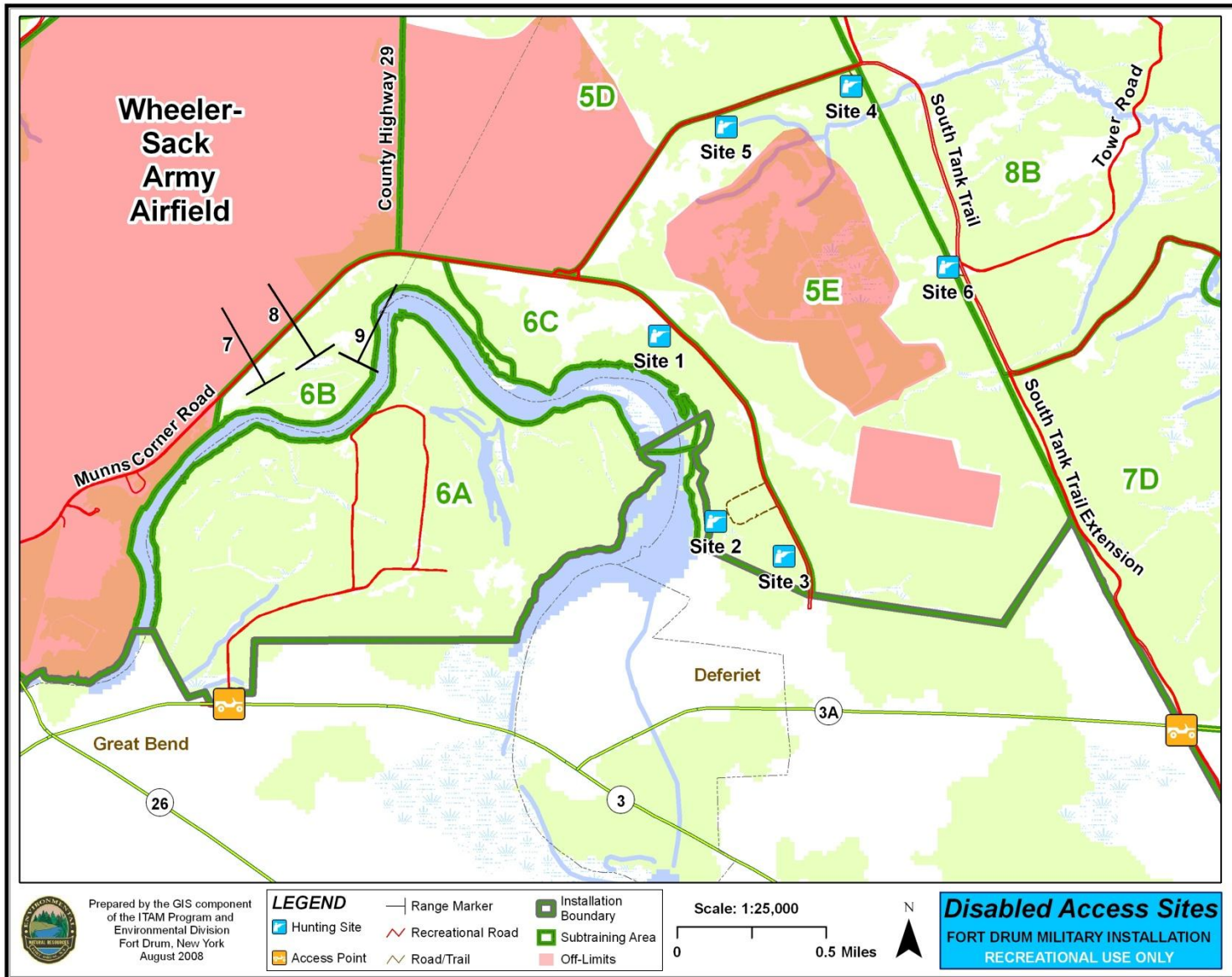
Site 6

## Disabled Access Hunting elsewhere on Fort Drum

- ONLY hunters possessing a valid NYS Non-Ambulatory Hunter Permit may hunt from an ATV or POV parked on designated recreational roads (see the Fort Drum Recreational Use Map) adjacent to any subtraining area open to recreational use for that day.
- Vehicles must be parked in such a manner to not obstruct traffic.
- The engine of the vehicle must be turned off while hunting and before the weapon is uncased.
- ATVs must be transported into the Training Area by vehicle or trailer.

## Archery Hunters

- Archery hunters must possess a valid New York State Modified Archer Permit or Modified Crossbow Permit to use modified bows per state regulations.



For more information about accessible recreation in NYS including fishing and camping, see the NYSDEC web page at <http://www.dec.ny.gov/outdoor/34035.html>.

